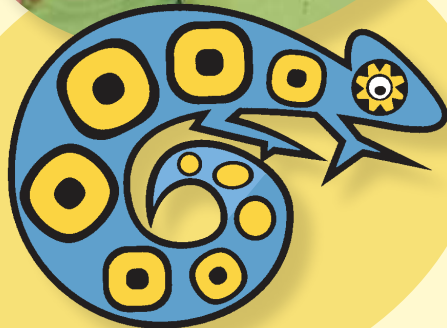


About

Chameleon's Journey™

Chameleon's Journey is an overnight grief camp for children and teens coping with the death of a family member or other significant person in their life. It is based on a journey of discovery by a chameleon that lost a special friend.

At Chameleon's Journey, campers learn ways to cope with their emotions while growing through new experiences, and they take comfort in learning that they are not alone in their grief.



About

Kids Path®

Kids Path is a specialized program for children coping with long-term or life-limiting illnesses, or who are dealing with grief associated with the loss of a loved one. It provides healthcare and support with the goal of helping children achieve a sense of normalcy during an illness or loss. Through Kids Path, children and their families receive nursing services in the home, counseling, and spiritual and grief support services.

Kids Path grief support services help children cope with loss through:

- Individual and group counseling
- In-school education and support
- Chameleon's Journey overnight weekend camps and half-day mini camps.

We sincerely thank our
2011 Chameleon's Journey sponsors.

Presenting Sponsor



Sustaining Sponsors

Charlotte-South Rotary Club
Claire Bear's Fund
The Grace and Hope Foundation, Inc.
Speedway Children's Charities

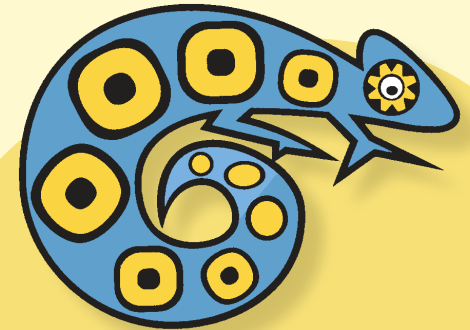
Hospice & Palliative Care Charlotte Region is a licensed provider of Kids Path®, which was founded in Greensboro, NC. To learn more about Hospice & Palliative Care Charlotte Region visit hpccr.org.



Kids Path®

PRESENTS

THE 12TH ANNUAL



Chameleon's Journey™

An Overnight
Grief Camp
for
Children & Teens
Ages 7 to 16

October 15-16, 2011

How Chameleon's Journey™ helps grieving children and teens



Grieving children and teens often feel alone in their grief. They feel that others cannot understand their loss when a family member or significant person in their life dies.

Chameleon's Journey helps grieving children and teens learn ways to cope with their loss and emotions. Under the guidance of trained counselors, participants share their feelings in a safe and caring environment, learning that they are not alone in their grief. They also learn that feelings which surface during the grief process are normal – and often difficult.

Through this amazing weekend of growth, campers gain new skills that help build confidence and hope for the future. Among the many activities of Chameleon's Journey are canoeing, zip-lining, rock wall climbing, music, drama, writing, and a campfire memorial service.

Camp staff

All Chameleon's Journey camp counselors and volunteers are trained by Hospice & Palliative Care Charlotte Region and Kids Path® professional staff. These staff members have an understanding of the grief process and are experienced in supporting children coping with loss.



2011 camp

The 12th annual Chameleon's Journey grief camp is October 15–16, 2011, at Camp Thunderbird in Lake Wylie, SC.

Camp Thunderbird is located approximately 20 miles southwest of uptown Charlotte, off Hwy. 49, at the NC/SC state line. Campers will sleep in cabins in small groups of the same age-range and gender, with an adult leader present in each cabin.

Parent and guardian participation



Although parents and guardians do not stay at the overnight camp, they are encouraged to attend a workshop each morning. The two workshops address adult grief and ways adults can help their grieving children.

How you can help

Chameleon's Journey is offered free of charge to all participants through the generous support of individuals, community organizations and area foundations. You can help ensure this camp remains available for all who need it by making a contribution to Chameleon's Journey.

For information about donating, please call our Development Office at 704.375.0100, or donate online at hpccr.org.



Request a registration packet

1) Complete and mail this form to:
**Kids Path
Hospice & Palliative Care Charlotte Region
1420 East Seventh Street
Charlotte, NC 28204**

OR

2) Complete and FAX this form to:
704.335.4304, or

OR

3) Visit hpccr.org and select "Chameleon's Journey" under "Latest News & Events" or "Grief and Loss Services" on the homepage.

Name (Print)

Address

City/State/Zip

Phone

Email

Upon returning this form, a registration packet will be sent to you. The packet will include an application and a medical history form, which must be completed and returned before applications can be processed.

All applications will be reviewed by camp staff and accepted applicants will be notified by mail. Apply early, as space is limited. Priority will be given to those who have not previously attended the camp. **All applications must be postmarked by September 23, 2011.** For more information call **704.375.0100** or visit **hpccr.org**.

